

Mother's Day 2023

TIFFANY & Co.



Tiffany HardWear link earrings in 18k rose gold with pavé diamonds.

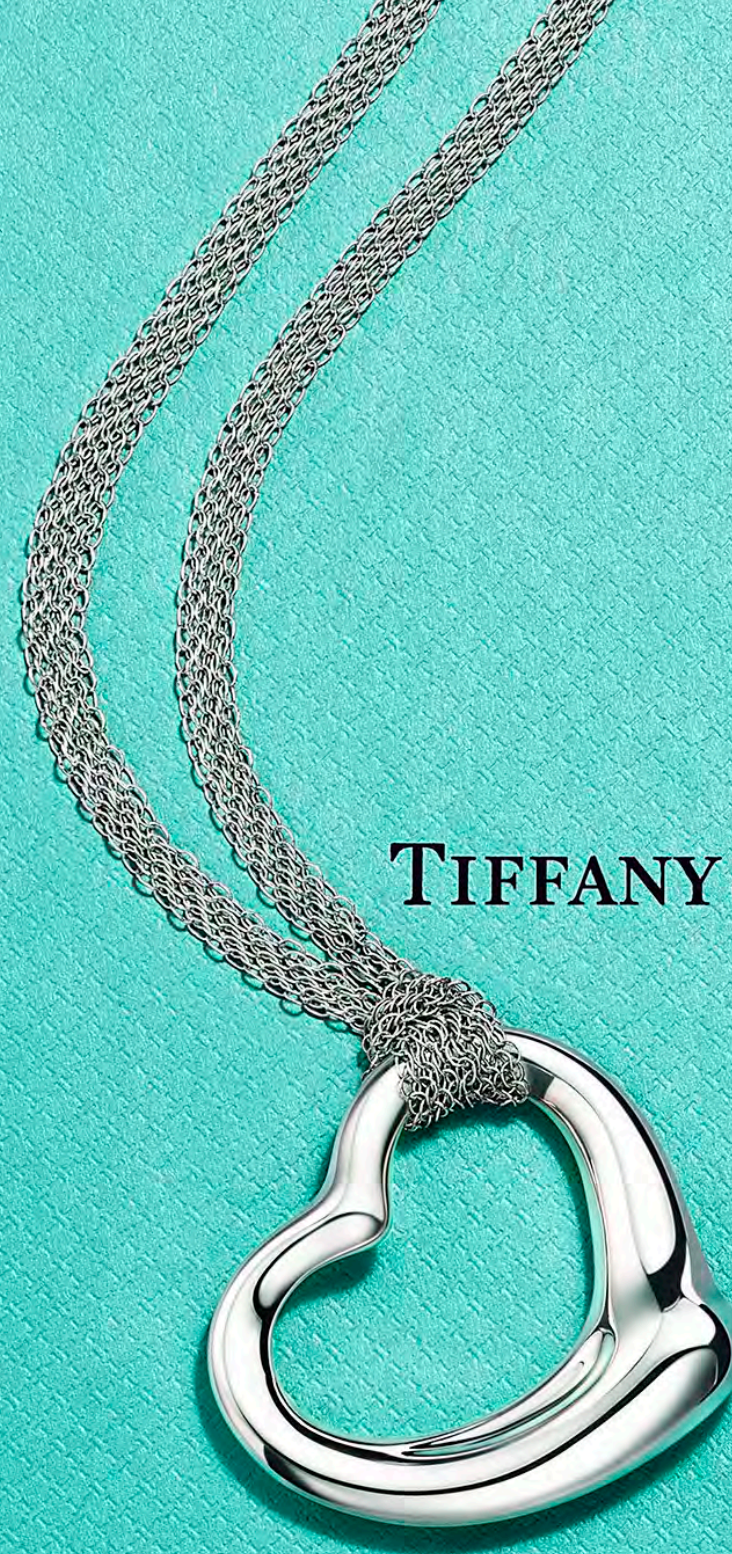
This Mother's Day,  
love comes in a little blue box.

Cover: Return to Tiffany® heart tag wrap necklace in sterling silver.





Tiffany Lock bangle in 18k yellow gold; Tiffany Lock bangle in 18k yellow and white gold with half pavé diamonds.



TIFFANY & CO.

Elsa Peretti® Open Heart pendant in sterling silver.





Tiffany T T1 hinged bangle in 18k rose gold with diamonds.



Tiffany Victoria® earrings in platinum with diamonds.



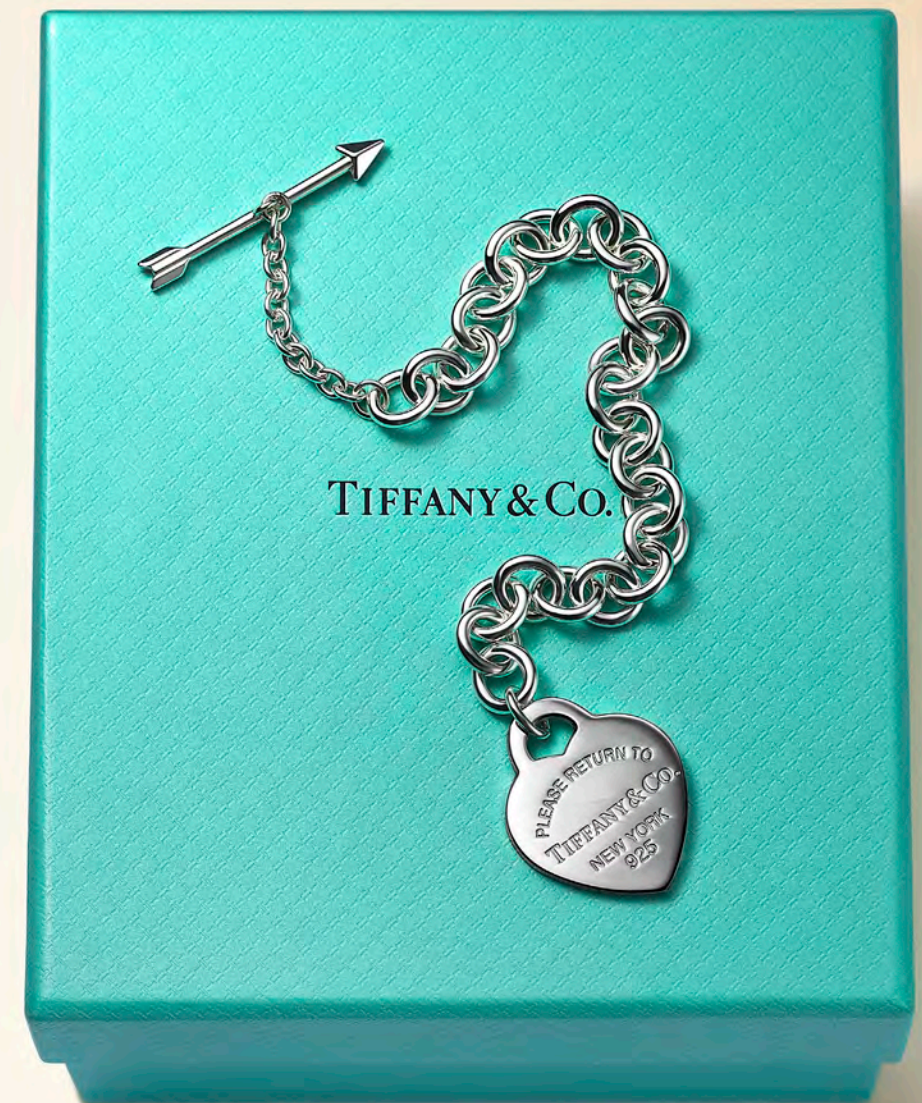


Tiffany Lock bangle in 18k rose gold with full pavé diamonds.



Tiffany Knot pendant and double row ring  
in 18k rose gold with diamonds.





Return to Tiffany® Lovestruck heart tag bracelet in sterling silver.



Tiffany Audubon teapot in porcelain;  
Tiffany Audubon sugar bowl in porcelain;  
Tiffany Audubon creamer in porcelain;  
Tiffany Audubon teacup and saucer in porcelain, set of two.





Paloma Picasso® Olive Leaf pendant in 18k yellow gold.



Paloma Picasso® Olive Leaf cuff in sterling silver.





Tiffany & Co. Schlumberger® Sixteen Stone ring in 18k yellow gold and platinum with diamonds.



Elsa Peretti® Bean® design pendants in 18k yellow gold with diamonds and 18k yellow gold.





Tiffany T bangle in 18k rose gold; Tiffany T bangle in 18k rose gold with diamonds; Tiffany T bangle in 18k rose gold with diamonds and mother-of-pearl.





Elsa Peretti® Diamonds by the Yard® sprinkle necklace in 18k yellow gold with diamonds; Elsa Peretti® Diamonds by the Yard® single diamond pendant in 18k yellow gold.



Tiffany HardWear link necklace in 18k yellow gold.



The Tiffany® Setting engagement ring in platinum.



Mother's Day 2023

# TIFFANY & Co.

Tiffany, Tiffany & Co. and T&CO. are trademarks of Tiffany and Company and its affiliates.

Original designs copyrighted by Tiffany and Company. © 2023 T&CO.

Original designs copyrighted by the Nando and Elsa Peretti Foundation.

Original designs copyrighted by Paloma Picasso.